

3 valve manifold

Model 3VM-1

2
YEARS
WARRANTY

Features

- Stainless steel construction Monel & Hastelloy-C276
- Isolates each port and equalizes pressure
- Provision of dust caps that prevent dust ingress
- Supplied with wetted parts according to NACE MR0175
- The controlled vent provides the option of draining to process fluid to collector or atmosphere
- PTFE packing optional grafoil

Applications

Chemical & petrochemical industries, refineries
Off shore and on shore fields
Storage tanks of fluids/gas
Thermal & nuclear power generation units
Waste treatment plant
OEM & machine apparatus
Seawater desalination plants
Chemical injection skids



Technical specification	3VM-1
Body	Stainless steel 316 optional Stainless steel 316L, Monel & Hastelloy-C276
Stem	Stainless steel 316 optional Stainless steel 316L, Monel & Hastelloy-C276
Valve assembly	Stainless steel 316 optional Stainless steel 316L, Monel & Hastelloy-C276
Connections	1/4" 3/8" 1/2" BSP / NPT, others on request
Packing	PTFE up to 240 °C (462 °F) optional Grafoil up to 538 °C (1000 °F)
T-handle	Stainless steel 304
Permissible pressure rating	6000 PSI @ 100°C (212 °F)
Drain Port	1/4" NPT(F)
Vent plug	Stainless steel 316 optional Stainless steel 316L, Monel & Hastelloy-C276

Order information

Type	Mounting	Connection	Form Inlet X Outlet	System material	Options
3VM-1	(R) Pipe to pipe	(02) 1/4" NPT (04) 1/2" NPT (03) 3/8" NPT (13) 1/4" BSP	(F/F) Female X female	(S) 316(1.4401) (L) 316L (1.4404) (P) Monel	(NH) Tagging Stamped (OF) Oil free (CD3) Material certificate for wetted parts
	(T) Pipe to flange	(14) 3/8" BSP (15) 1/2" BSP	(F/FL) Female X flange	(H) Hastelloy-C276	(10K) Pressure rating 10000PSI ¹⁾ (G) Grafoil packing
	(H) Flange to flange	(=) Flange	(FL/FL) Flange X flange	Others on request	(CD5) NACE MR 0175/ ISO15156-2005

1) Detailed drawing shall be provided on request

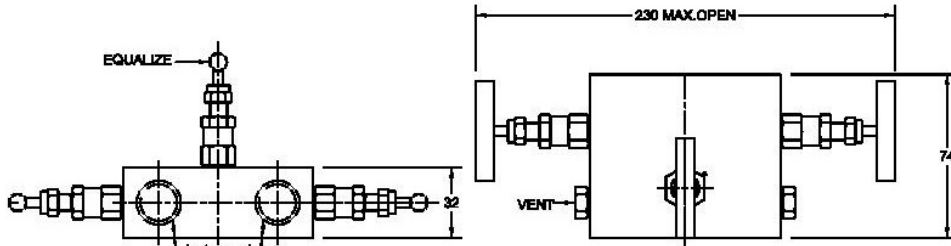
How to order

Type	Mounting	Connection	Form	System material	Options
3VM-1	R	04	F/F	L	CD5

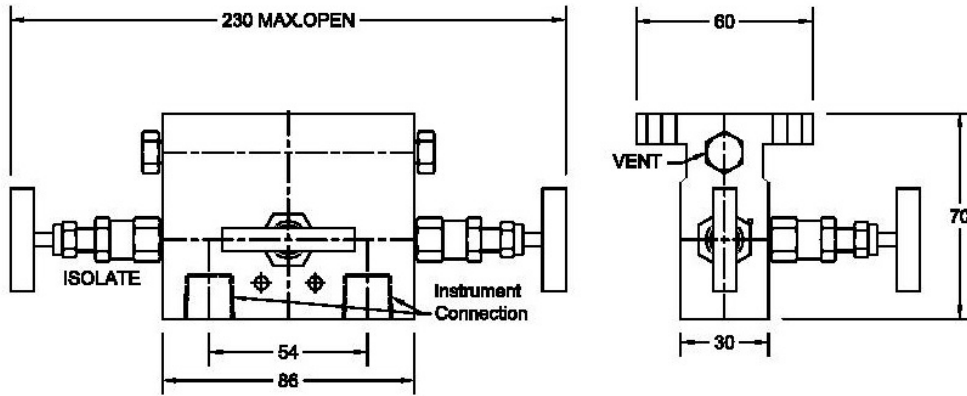
All specifications are subject to change without notice.

3 valve manifold

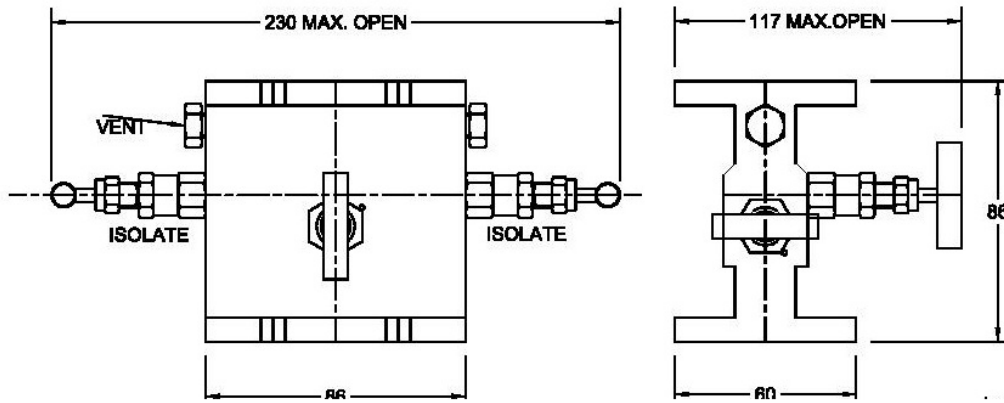
R-Type



T-type



H-type



Pressure Rating: 6000psi @ 100°C (212 °F)
 Dimension shall be differ for option 10K

